

Cottages on the Green



Single-Story
 3 Bdrms / 2 Baths
 Approx. 1,486 Sq.Ft.
 Approx. .15 Acre Lot
 2-Car Garage
 Community Park

Located
 in the
 Distinguished
 Orcutt
 School
 District!

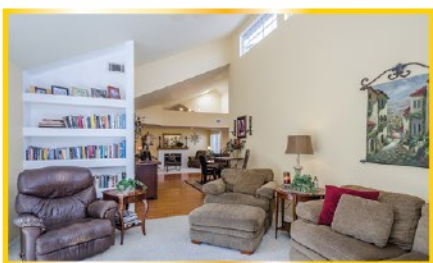


Breakfast Bar Counter



LOVELY ORCUTT AREA HOME WITH IDEAL CUL-DE-SAC LOCATION 1460 Worchester Ct., Orcutt/Santa Maria, CA 93455

- Property Features Include; Lovely Front Living Room That Has White-Painted Brick Fireplace With Wood Mantle, Vaulted Ceiling, Attractive Color Design Paint, Premium Carpet And Front View Window.
- Comfortable Back Family Room With High Vaulted Ceiling With Upper Level Windows For An Abundance Of Natural Light, Built-In Bookshelves, Hanging Ceiling Fan And French Door Access To Back Yard.
- Charming Kitchen With Beautiful Hard Wood Floors, Tile Counter Tops, Breakfast Bar With Built-In Gas Stove/Oven, Handsome Wood-Style Cabinets, Vaulted Ceiling With Skylight, Modern Style Hanging Light And Large Table Dining Area.
- Relaxing Bedrooms Including Master Bedroom Suite With Vaulted Ceiling, Attractive Color Design Paint, Walk-In Closet, Premium Carpet And Personal Bathroom.



Family Room

\$416,500



Master Bedroom Has Vaulted Ceiling



Master Bathroom



Fenced Rear Yard With Patio

INFORMATION HEREIN DEEMED RELIABLE BUT NOT GUARANTEED. VERIFY INDEPENDENTLY.